

THE OAK

2 bedroom home

THE
DUNES
HEMSBY



This image is an artist's impression and for illustration purposes only. It should not be seen as a like for like representation of the final development.

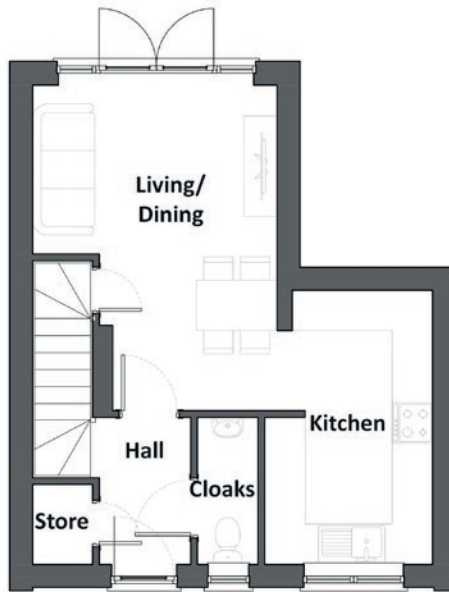


THE OAK

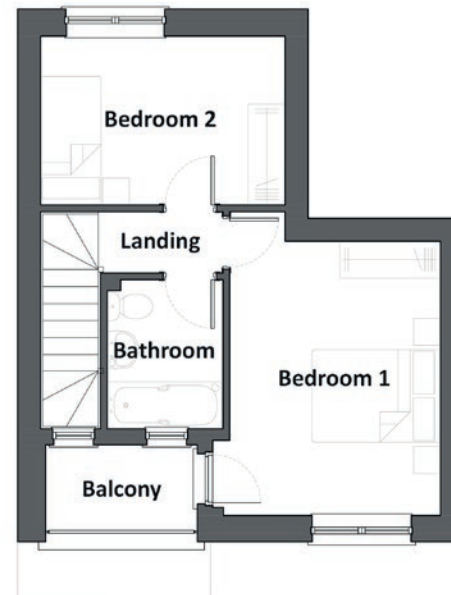


THE DUNES

HEMSBY



Ground Floor



First Floor

GROUND FLOOR

| | | |
|----------------|-------------------|-----------------------|
| Living/dining: | 3635 × 4835mm max | 11' 11" × 15' 10" max |
| Kitchen | 2495 × 4075mm max | 8' 2" × 13' 4" max |

FIRST FLOOR

| | | |
|------------|-------------------|---------------------|
| Bedroom 1: | 3135 × 4075mm max | 10' 3" × 13' 4" max |
| Bedroom 2: | 2510 × 3635mm max | 8' 3" × 11' 11" max |

The description and measurements herein, do not form any part of a contract. Whilst every effort has been made to ensure accuracy, this cannot be guaranteed. Site layouts, floor plans and specifications are taken from drawings which were correct at the time of print. The plan is not to scale and room sizes are approximate and subject to change. Measurements were taken from plans and are for guidance purposes only. The information and imagery on this leaflet is for guidance purposes only and does not constitute a contract, part of contract or warranty.